



OPTIMUM PROTECTION™
www.cleanroomsuppliesltd.com



HYGIENIC FURNITURE CATALOGUE

FURNITURE

Welcome

At **Cleanroom Supplies** our Managing Director is a leading expert in the design and construction of complex cleanrooms and laboratories.

Established for over **15** years, we are well placed to fully understand your needs when it comes to contamination control.

Our **unbeatable** experience and knowledge means we can provide you with all the correct products and information, when you need them and at the right price.

Cleanroom Supplies is a single source for all of your disposable garments and contamination control products.

If you cannot find what you need, we can source, customise and manufacture many of your requirements.

Why Choose Us?

- Customer centred commitment and service
- Optimum brand means high quality products and competitive prices
- Unbeatable experience and knowledge on all our products; sample before you buy
- Bespoke Furniture service (See page 12 for more details)
- Trade Friendly: Direct dispatch to your customer with your paperwork

How many more reasons do you need? **Talk to our helpful staff about your requirements.**

Industries

- Pharmaceutical
- Microelectronic
- Aseptic Suites
- Medical Device
- Biotechnology
- NHS & Healthcare
- Laboratories
- Food Packaging & Production
- Crime Scene & Forensic
- Construction Industry
- Veterinary
- University & Local Authority
- Asbestos Removal

And More...



*Terms Apply

Product Categories

BESPOKE CLEANROOM FURNITURE 1

BESPOKE CLEANROOM FURNITURE 1

DISPENSERS 2

DISPENSERS 2

CHANGING EQUIPMENT 5

CHANGING EQUIPMENT 5

TROLLEYS 6

TROLLEYS 6

TABLES **7**

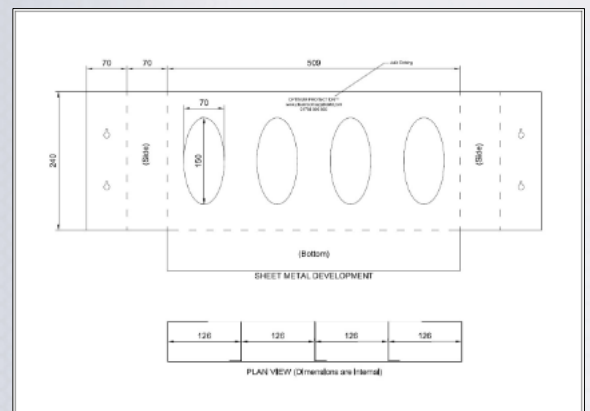
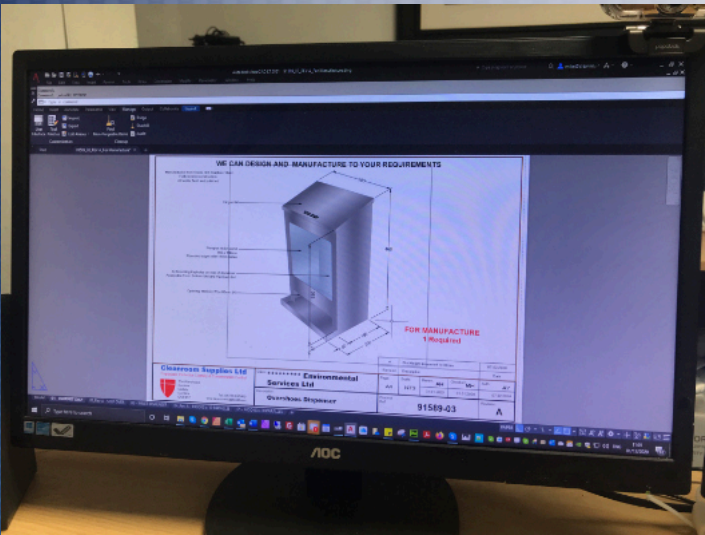
TABLES **7**

CHAIRS 9

CHAIRS 9

PRODUCTION & OFFICE EQUIPMENT **11**

PRODUCTION & OFFICE EQUIPMENT **11**



Ask about our free bespoke design service

Here at Cleanroom Supplies we understand what it is like when all the standard cleanroom furniture catalogues you are looking through are too standard, and not quite what you are looking for. This exercise can be frustrating and time consuming.

We also fully understand the importance of good design and quality manufacture when dealing with controlled environments. That understanding comes from our Managing Director's experience in the design and construction of many cleanrooms and laboratory environments.

We will work with you and design the furniture you want - and best of all this service is **FREE!** We will produce CAD drawings of your requirements. When you are happy with the design we will manufacture and deliver the furniture or bespoke fabrication for you. This includes manufacture of items from 304 or 316 Grade Stainless steel, TRESPA, laminates or any other cleanroom suitable material.

So if you are looking for bespoke tables, benches, workstations, trolleys, pass through hatches, air showers, step over benches ... or virtually anything else, please just give us a call or drop us an email and we will work with you to design furniture that meets your requirements, free of charge.

Examples of the design services provided:

- Trespa or Stainless Steel
- Step-Over Benches
- Workbenches
- Pass-Through Hatches
- Clothing Storage
- Dispensers
- Breakout Panels
- Bespoke Trolleys



Stainless Steel Table With Castors



Cleanroom Storage



Washroom Furniture



Trespa and Stainless Steel Pass Through Hatches



CD-ST



LCD-ST

Garment Dispenser

Our wall mounted garment dispenser is manufactured from quality 304 stainless steel and comes complete with pre-drilled mounting holes. Suitable for use with lab coats and coveralls. Available with either a large viewing panel or a smaller viewing slot in the front face, to provide visual indication of when to top up dispenser. Comes without lip at the bottom of the dispenser.

Our dispensers are also available in higher grade 316 grade stainless steel.

Features:

- Grade 304 Stainless Steel
- Viewing panel or slot
- Quality manufacturer
- Long lasting & hygienic
- No lip to snag the garment
- Can be etched with garment size (optional extra)
- Dimensions = 20cm x 30cm x 46cm
- Bespoke sizes available - contact us

Multipurpose Dispenser

High quality stainless steel multipurpose dispenser. Manufactured from quality 304 stainless steel and comes complete with pre-drilled mounting holes. Incorporates small viewing slot in front to provide visual indication of when to top up dispenser. Suitable for a wide range of PPE including mob caps, hair nets, beard covers, overshoes, earplugs and oversleeves. Suitable for use in cleanrooms, laboratories, pharmaceuticals and other critical environments. Available in 3 sizes.

Single = 300mm (W) x 200mm (D) x 400mm (H)

Double = 600mm (W) x 200mm (D) x 400mm (H)

Triple = 900mm (W) x 200mm (D) x 400mm (H)

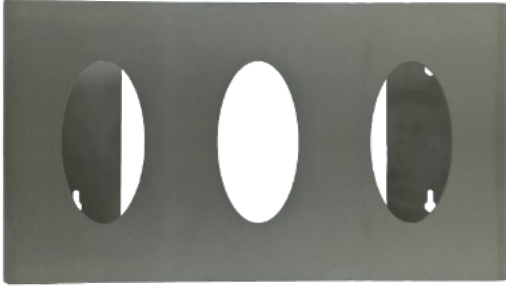
Manufactured from Grade 304 stainless steel as standard.

Features:

- 304 Grade Stainless Steel (also available in 316 grade)
- Available in 3 different sizes - See Above
- Manufactured with pre-drilled mounting holes
- Includes a small viewing slot
- Suitable for a wide range of PPE
- Can be etched with garment size (optional extra)
- Bespoke sizes available - contact us



SS-MPD

**GD-ST**

Glove Dispenser

Our wall mounted glove dispenser is manufactured from quality grade 304 stainless steel and comes complete with pre-drilled mounting holes. Suitable for most box sizes of 100 disposable latex or nitrile gloves. Size of dispenser to suit a standard box size of 23cm x 12cm x 6cm. If your glove boxes differ from this, please contact us because we can manufacture to suit any size.

Our dispensers are also available in higher grade 316 grade stainless steel.

BESPOKE DESIGN

Contact us to find out more about our bespoke furniture design service for Stainless Steel and Trespa products.

SERVICE AVAILABLE

Features:

- Grade 304 Stainless Steel
- Available to suit 1, 2, 3 or 4 boxes of gloves
- Fixings included
- Quality Manufacturer
- Long-lasting and Hygienic

Glove Dispenser with Hinged Door

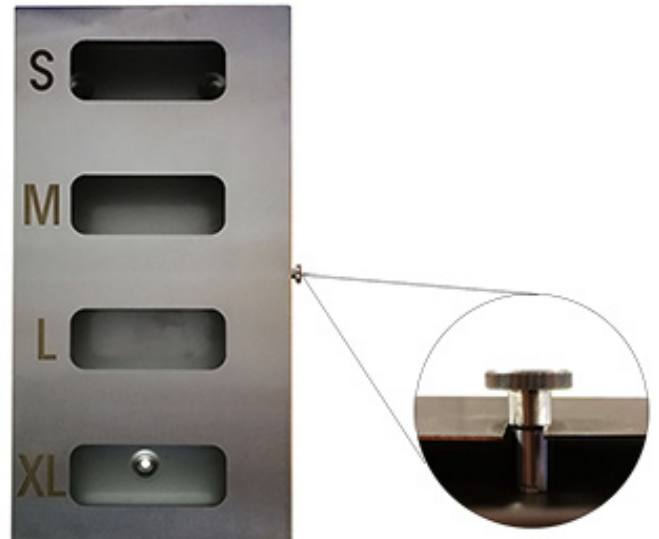
High quality 304 grade stainless steel dispenser for quick and easy access to disposable gloves in hygienic environments.

With four compartments, a hinged door and thumb screw closure. Four dispensing slots in door. Pre-drilled holes on the rear of the dispenser allow for wall mounting in cleanroom, food and hygiene environments. Laser etched size guides indicate position of each size.

Our dispensers are also available in higher grade 316 grade stainless steel.

Features:

- Grade 304 Stainless Steel
- Four compartments
- Laser etched size guides
- 596mm (H) x 289mm (W) x 96mm (D)
- Suitable for most standard box sizes (Bespoke Sizes can be manufactured - please enquire)



Hairnet & Overshoe Dispenser



OSD-ST / HND-ST

Our wall mounted hairnet and overshoe dispenser is manufactured from quality 304 stainless steel, with pre-drilled mounting holes. Incorporates vision panel in front to provide visual indication of when to top up dispenser. Our dispensers are also available in higher grade 316 grade stainless steel.

Features:

- Grade 304 Stainless Steel (Grade 316 also available - please enquire)
- Viewing panel
- Fixings Not Included
- Quality Manufacturer
- Long Lasting & Hygienic
- Dimensions = 20cm x 30cm x 46cm
- Bespoke sizes available - contact us

Plastic Apron Dispenser

Our hygienic roll holders will leave surfaces clear and clean and will provide a long lasting and easy dispensing solution. For use with our rolls of disposable aprons.

Features:

- Hygienic
- Lightweight and Durable
- Keeps Surfaces Clean and Clear
- Wall Mounted
- Fixings not supplied
- Packed Individually
- Manufactured from PVC



APRON-DISP

Paper Towel Dispenser



CPW-DISP

An ABS plastic dispenser designed to hold a roll of centrefeed paper towels with a 185mm diameter. Suitable for busy washrooms, this dispenser is surface mounted with concealed fixings and is very quick and easy to install. It is lockable with a special key for refilling and also has a viewing window, making it easy to see when a refill is required.

Features:

- Dimensions = 320mm (H) x 210mm (W) x 220mm (D)
- Capacity = 185mm x 150m paper roll
- Front viewing window
- Surface mounted with concealed installation (Fixings supplied)
- Manufactured from blue ABS plastic

Stepover Cleanroom Bench - Shoe Storage

Manufactured from quality grade 304 stainless steel as standard, with shoe storage on one side. Hygienic design and easy to clean, making it suitable for use in cleanrooms, food production industry and other clean environments. Standard bench contains 8 shoe storage pigeon holes in grade 430 stainless steel.

Available without shoe storage (see below).



SOB-S

Features:

- Grade 304 and 430 Stainless Steel (also available in 316 grade)
- Adjustable feet
- Easy to clean
- Fully welded construction
- Standard Size: 1000mm (L) x 400mm (D) x 450mm (H)
- Bespoke sizes also available

Stepover Cleanroom Bench - No Storage

Stainless steel stepover bench with underframe. Manufactured from quality grade 304 stainless steel as standard. Hygienic design and easy to clean, making it suitable for use in cleanrooms, food production industry and other clean environments.



SOB-NS

Features:

- 304 Grade Stainless Steel (also available in 316 grade)
- Adjustable feet
- Easy to clean
- Available in a range of sizes
- Bespoke sizes and designs are also available

Size Options (L x D x H)

920 mm x 400 mm x 450 mm

1170 mm x 400 mm x 450 mm

1420 mm x 400 mm x 450 mm

1920 mm x 400 mm x 450 mm

Laser Cut Coat Hook

Coat hook laser cut from 2.5mm stainless steel satin polished sheet. Suitable for use in cleanrooms, laboratories and other hygiene areas. Available either staggered or non-staggered in two sizes - 10 hook or 20 hook. Manufactured with pre-drilled holes suitable for wall mounting.



SS-CH

Features:

- Grade 304 and 430 Stainless Steel (also available in 316 grade)
- Available in 2 sizes, and with the hooks staggered or unstaggered

2 Tier Stainless Steel Trolley

Manufactured from stainless steel, our trolleys are ideal for transporting equipment in cleanrooms, laboratories and other environments that require a focus on hygiene levels. Available as either self-assembly or fully welded.

Features:

- Manufactured from Stainless Steel
- 4 Swivel Castors
- 2 Lockable Castors
- 2 Shelves
- Wall Bump Protection
- Sound Insulation



04112-LG

Product Code	Description	Dimensions (L x D x H)
TROL2S	2 Tier Trolley Self-Assembly	84 cm x 50.5 cm x 84 cm
05112-W2T	2 Tier Trolley Fully Welded	90 cm x 60 cm x 95 cm

2 Tier Stainless Steel Trolley

Manufactured from stainless steel, our trolleys are ideal for transporting equipment in cleanrooms, laboratories and other environments that require a focus on hygiene levels. Available as either self-assembly or fully welded.

Features:

- Manufactured from Stainless Steel
- 4 Swivel Castors
- 2 Lockable Castors
- 2 Shelves
- Wall Bump Protection
- Sound Insulation



04113-LG

Product Code	Description	Dimensions (L x D x H)
TROL3S	3 Tier Trolley Self-Assembly	84 cm x 50.5 cm x 94.5 cm
05113-W3T	3 Tier Trolley Fully Welded	90 cm x 60 cm x 90 cm

Stainless Steel Table with Void



SST-V

Fully welded stainless steel table with castors. Designed and manufactured with quality and strength in mind. Ideal for sterile and hygienic environments, it provides a hygienic and easy-clean working surface.

Tabletops are manufactured from 304 Grade stainless steel, with Grade 430 legs. All welds are ground and polished to ensure minimum contamination pockets.

The legs are manufactured from stainless steel box section. Each leg is fitted with plastic adjustable feet which are used to even up the table level on uneven floor surfaces. The leg brace can be located either centrally or to the rear or the table.

Our furniture is also available in higher grade 316 Grade stainless steel or with Grade 304 throughout.

This table is sold in 4 standard sizes, but we can manufacture to your bespoke requirements - please contact us if you require this service.

Stainless Steel Desk with Cupboard

Stainless steel standard desk, manufactured from quality grade 304 stainless steel, complete with adjustable feet and sloping desk surface suitable for writing. Hygienic design and easy to clean, making it suitable for use in cleanrooms, laboratories and other clean environments.

One size.

Features:

- 304 Grade Stainless Steel
- Sloped Writing Surface
- Adjustable Feet
- Dimensions: 560mm (W) x 596mm (D) x 900mm (H)



SS-SD

Stainless Steel Desk with Cupboard



SS-DC

Grade 304 Stainless Steel free-standing desk, with secure storage for production items and documents. Includes a sloped writing surface. Suitable for use in cleanrooms, laboratories, and other hygiene environments.

One size.

Features:

- 304 Grade Stainless Steel
- Sloped Writing Surface
- Secure Storage
- Dimensions: 560mm (W) x 596mm (D) x 900mm (H)

Stainless Steel Table with Castors



SST-C

Fully welded stainless steel construction for cleanroom, laboratory and food preparation areas. These products are designed and manufactured with quality and strength in mind. Ideal for sterile and hygienic environments, they provide a hygienic and easily cleanable working surface.

Tabletops are manufactured from 304 Grade stainless steel, with Grade 430 legs. All welds are ground and polished to ensure minimum contamination pockets.

Our furniture is also available in higher grade 316 grade stainless steel.

The legs are manufactured from stainless steel box section, and have low level box section tie bars on 3 sides, allowing under bench units to be placed underneath. Each leg is fitted with 4 x high quality castors. 2 of the castors include brakes.

There is no undershelf on this option (a void). If you prefer a table with an undershelf, then please contact us, as we can manufacture to your exact requirements.

Please note: These tables are not self-assembly.

BESPOKE DESIGN

Contact us to find out more about our bespoke furniture design service for Stainless Steel and Trespa products.

SERVICE AVAILABLE

Standard Sizes Available (L x D x H)

1200mm x 600mm x 900mm

1500mm x 600mm x 900mm

1800mm x 600mm x 900mm

2100mm x 600mm x 900mm

Stainless Steel Table with Undershelf



SST-S

Fully welded stainless steel construction for cleanroom, laboratory and food preparation areas. These products are designed and manufactured with quality and strength in mind. Ideal for sterile and hygienic environments, they provide a hygienic and easily cleanable working surface.

Tabletops are manufactured from 304 Grade stainless steel, with Grade 430 legs. All welds are ground and polished to ensure minimum contamination pockets.

Our furniture is also available in higher grade 316 grade stainless steel.

The legs are manufactured from stainless steel box section, and have low level box section tie bars on 3 sides, allowing under bench units to be placed underneath. Each leg is fitted with plastic adjustable feet which are used to even up the table level on un-even floor surfaces.

There is an undershelf on this option - so this may limit leg room if sitting at the bench, and limits placing of underbench units under the table.

We also offer the option to add a rear upstand to the table.

Please note: These tables are not self-assembly.



06-3F

Vinyl Cleanroom Chair with Filter

A durable cleanroom chair constructed with a cushioned seat and upholstered in antibacterial vinyl that can be easily cleaned. Ideal for cleanroom, laboratory, food and medical industries.

These chairs are fully ergonomic with a tilting back mechanism and tilting seat.

Chairs include filters below the seat that prevent dust ejecting into the air.

See colour chart for colour options.

Vinyl Anti-Bacterial



*Available in a range of colours and with the options of standard castors, glide feet and loadlock castors.

Cushioned PU Stool

A durable industrial stool constructed with a cushioned polyurethane seat that can be washed. Ideal for cleanroom, laboratory, food and medical industries.

Features:

- High Stool complete with Foot Rest
- Lever Gas Lift Height Adjustment
- Low Stool: Height Adjustment 480mm to 680mm (For Desk Use)
- High Stool: Height Adjustment 550mm to 800mm (For Bench Use)



06-4

*Available with the options of standard castors, glide feet, manual lockcastors and loadlock castors.

PU Posture Stool

A durable industrial stool constructed with a cushioned polyurethane seat that can be washed. Ideal for cleanroom, laboratory, food and medical industries.

Ergonomically designed for operators, to take the weight of an operator whilst allowing them to work at standing height, thus reducing fatigue.



06-5

*Available with the options of standard castors, glide feet and loadlock castors.



06-1

PU Cleanroom Chair

A durable cleanroom chair constructed with a cushioned polyurethane seat and back that can be washed or steam cleaned. Ideal for cleanroom, laboratory, food and medical industries.

These factory chairs are fully ergonomic with a tilting back mechanism and tilting seat.

*Available with a choice of standard castors, glide feet and loadlock castors.

ESD PU Cleanroom Chair

A durable cleanroom chair constructed with a cushioned polyurethane seat and back that can be washed or steam cleaned.

ESD chair specifically designed and manufactured for use in the electronics and electrical industries.

This range prevents the build-up of static electricity by dissipating it directly to earth. The chairs are totally ergonomic with a tilting seat and fully adjustable back mechanism.

*Available with an option of standard castors, glide feet and loadlock castors.



06-2

Vinyl Cleanroom Chair

A durable cleanroom chair constructed with a cushioned seat and upholstered in antibacterial vinyl that can be easily cleaned. Ideal for cleanroom, laboratory, food and medical industries.

These chairs are fully ergonomic with a tilting back mechanism and tilting seat.

See colour chart for colour options.

*Available in a range of colours and with the options of standard castors, glide feet and loadlock castors.



06-3

Vinyl Anti-Bacterial

Anthracite	Battleship	Dune
Sapphire	Lupin	Cool Blue
Rouge	Candy	Lilac
Rainforest	Citrus	Sea Green
Coca	Lemon	White

Stainless Steel Circular Bogie



SS-CB

High quality, fully welded circular bogie for safe transportation of products in cleanrooms, laboratories and food areas. Includes 100mm white nylon castors. Manufactured from Grade 304 Stainless Steel.

Bespoke sizes available. Available in 316 Grade Stainless Steel.

Sizes Available:

- 300mm Diameter
- 400mm Diameter
- 450mm Diameter

Stainless Steel Clipboard

High quality stainless steel clipboard. Suitable for use in cleanrooms and laboratories as well as other hygiene areas. Available in either A3 or A4 size.

This product is manufactured from grade 304 stainless steel as standard.

Styles Available:

- A4 Clipboard
- A4 Clipboard with Return
- A3 Clipboard - Landscape
- A3 Clipboard - Portrait



SS-C

Stainless Steel Straight-Sided Jugs



SS-SSJ

Stainless steel straight sided jug, manufactured from quality Grade 304 Stainless Steel. Fully welded and crevice free, suitable for use in cleanrooms, laboratories and other clean environments. Bright polished and various options for different capacities. Also available in Grade 316 Stainless Steel (please enquire).

Sizes Available:

- 500ml
- 1L
- 1.5L
- 2L

Stainless Steel Funnels

Fully welded, crevice free polished stainless steel funnels - suitable for use in cleanrooms, laboratories and other clean environments. Manufactured from grade 304 stainless steel.

A wide variety of sizes are available, ranging from 50mm diameter to 305mm diameter.

We can also manufacture custom sizes or from Grade 316 Stainless steel, please contact us with your requirements.



SS-F

Stainless Steel Document Holder



SS-DH

Stainless steel document holder for A4 documents, files and clipboards. Suitable for use in cleanrooms, laboratories and other hygienic environments. Manufactured with pre-drilled holes for easy fitting and wall mounting.

This product is manufactured from grade 304 stainless steel as standard. Also available in Grade 316 Stainless Steel, please enquire.

Features:

- Grade 304 Stainless Steel (316 also available)
- Available in 2 sizes
- Bespoke sizes available on request

Stainless Pedal Bin

Free standing pedal bin manufactured from grade 304 stainless steel. Complete with bag clamping band and foot operated pedal. Option for a stainless steel shrouded bin or non-shrouded bin. Suitable for hygienic waste disposal in cleanrooms, laboratories and other clean environments.

Standard dimensions = 500mm (L) x 400mm (W) x 800mm (H)



SS-PB

Features:

- Grade 304 Stainless Steel (316 also available)
- Free Standing
- Shrouded and Non-Shrouded Options
- Foot Operated Pedal
- Bag Clamping Band

Stainless Steel Wall-Mounted Bag Holder



SS-WMBH

Wall mounted bag holder manufactured from grade 304 stainless steel, complete with bag clamping band and knee-operated pedal for hygienic waste disposal in cleanrooms, laboratories and other clean environments. Standard 350mm diameter. Manufactured with pre-drilled holes for easy wall mounting and stainless steel lid.

Features:

- Grade 304 Stainless Steel (316 also available)
- Pre-Drilled Holes for Wall-Mounting
- Bag Clamping Band
- Knee-Operated Pedal
- 350mm Diameter
- Stainless Steel Lid

TELEPHONE
01768 896 800

ONLINE
www.cleanroomsuppliesltd.com

EMAIL
orders@cleanroomsuppliesltd.com

About Us

Cleanroom Supplies Ltd offers everything you need in one place. If you manage a cleanroom or laboratory, we understand your needs. Controlled or hygienic environments are our speciality. Contamination control is our business.

We ship worldwide from our warehouse. UK Next Day delivery is available on most stock items. Be confident ordering from our online cleanroom shop. Order today, receive your order tomorrow.

Our friendly staff are on hand to answer any queries. Please don't hesitate to Contact Us.



OPTIMUM PROTECTION™
www.cleanroomsuppliesltd.com



Cleanroom Supplies Ltd
The Warehouse,
Cumrew,
Carlisle,
Cumbria.
CA8 9DD

Tel: 01768 896 800