

PRODUCT DATA SHEET

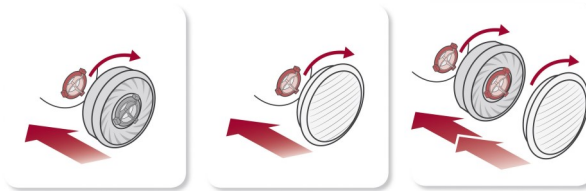
Moldex Easylock Filter System

Benefits:

- Easy handling, as no adapters or particulate filter holders are necessary with the system
- Reduces breathing resistance and considerably increases the capacity of the particulate filters
- The pre-assembled filter combinations offer the simplicity of combined filters and are more economical at the same time due to exchangeable pre-filters
- Simpler logistics, on average contains 30% less parts
- 100% PVC free. All Modlex products and packaging are 100% PVC free



EASYLOCK®



Instructions for use:

- The mask and the filters must be selected in accordance with the pollutant concentration
- In the case of gases with insufficient warning properties, filters may only be used if special usage policies are specified for this purpose.
- If the conditions are uncertain or changeable, a self-contained breathing apparatus must be worn.
- The product does not contain any metallic parts that could cause ignition in potentially explosive atmospheres.

Product Description

- Suitable for the Series 7000 and 9000 masks
- Bayonet connector
- Particulate filters can either be connected with the gas cartridges or directly with the mask body
- Adaptors and particular pre-filters are not necessary

Certification

- The Easylock filters meet the requirement of EN 14387:2004+A1:2008 and EN 143:2000 + A1:2006 and are CE-marked in accordance with the requirements of European Directive 89/686 EEC
- The products are manufactured in an ISO 9001 certified plant

Materials:

- **Particulate filter:** Polypropylene
- **Particulate filter 9022, 9032:** Polypropylene, activated carbon
- **Particulate filter holder:** Polypropylene
- **Gas filter:** Activated carbon
- **Gas filter cartridge:** Polystyrene